

PRODUCT INFORMATION PACKET

Model No: 056A11O5313
Catalog No: X218
3/4,1075,OPEN,56Z,1/60/108-230
Other Purpose



Regal and Marathon are trademarks of Regal Beloit Corporation or one of its affiliated companies.
©2018 Regal Beloit Corporation, All Rights Reserved. MC017097E





Nameplate Specifications

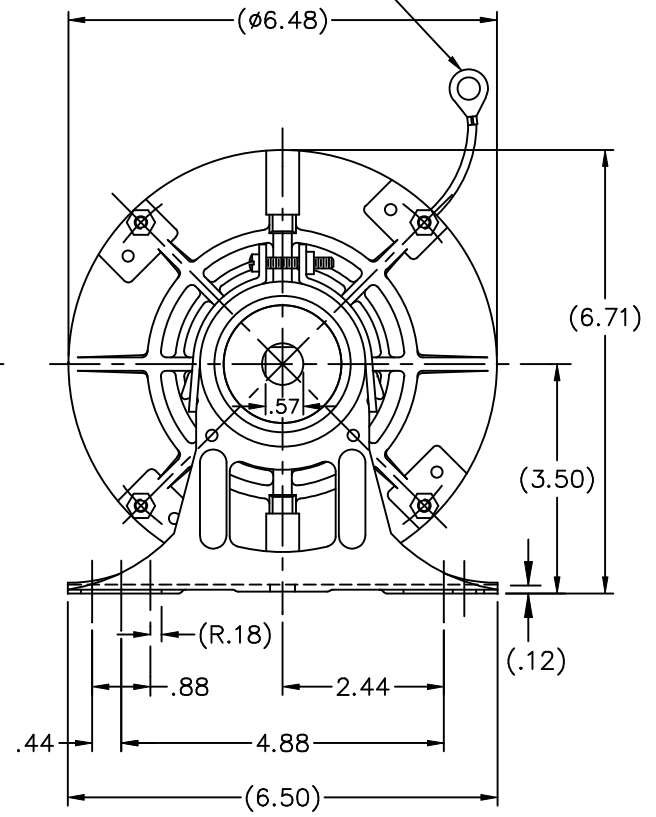
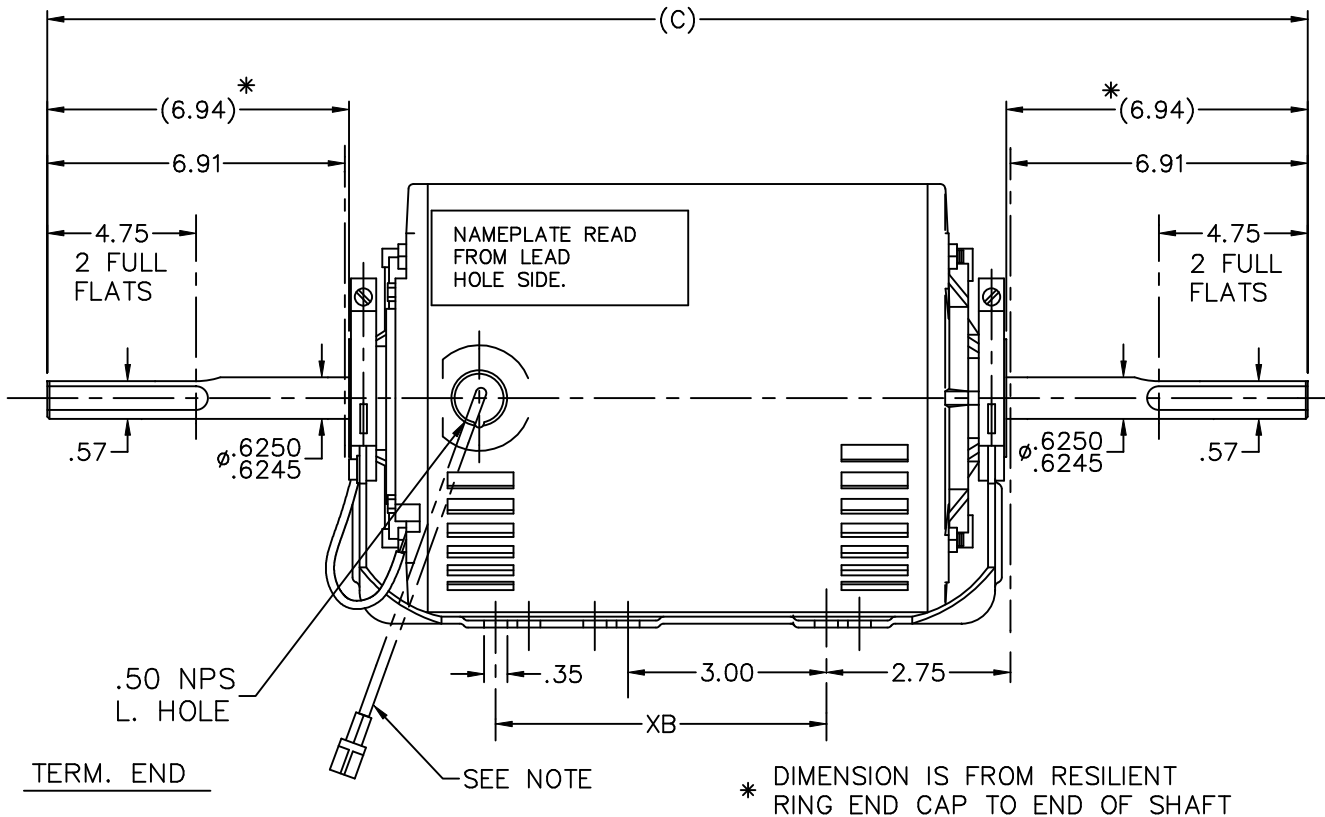
Output HP	0.75 Hp	Output KW	0.56 kW
Frequency	60 Hz	Voltage	208-230 V
Current	3.9-3.6 A	Speed	1075 rpm
Service Factor	1	Phase	1
Efficiency	75.5 %	Duty	Continuous
Insulation Class	B	Design Code	NO DESIGN CODE
KVA Code	C	Frame	56Z
Enclosure	Open Air Over	Overload Protector	Automatic
Ambient Temperature	60 °C	Drive End Bearing Size	6203
Opp Drive End Bearing Size	6203	UL	Recognized (Not Protector)
CSA	Y	CE	N
IP Code	10		

Technical Specifications

Electrical Type	Permanent Split Capacitor	Starting Method	Across The Line
Poles	6	Rotation	Fixed Counterclockwise
Mounting	Resilient Base	Motor Orientation	Horizontal
Drive End Bearing	Ball	Opp Drive End Bearing	Ball
Frame Material	Rolled Steel	Shaft Type	Special Extension Both Sides
Overall Length	23.82 in	Shaft Diameter	0.625 in
Shaft Extension	6.91/6.91 in	Assembly/Box Mounting	F1 Only
Outline Drawing	A-100582-756	Connection Diagram	102009-10

This is an uncontrolled document once printed or downloaded and is subject to change without notice. Date Created: 06/29/2018

GREEN GROUND LEAD 12.00"
W/TERM FOR #10 SCREW.
TERM. END



* DIMENSION IS FROM RESILIENT RING END CAP TO END OF SHAFT

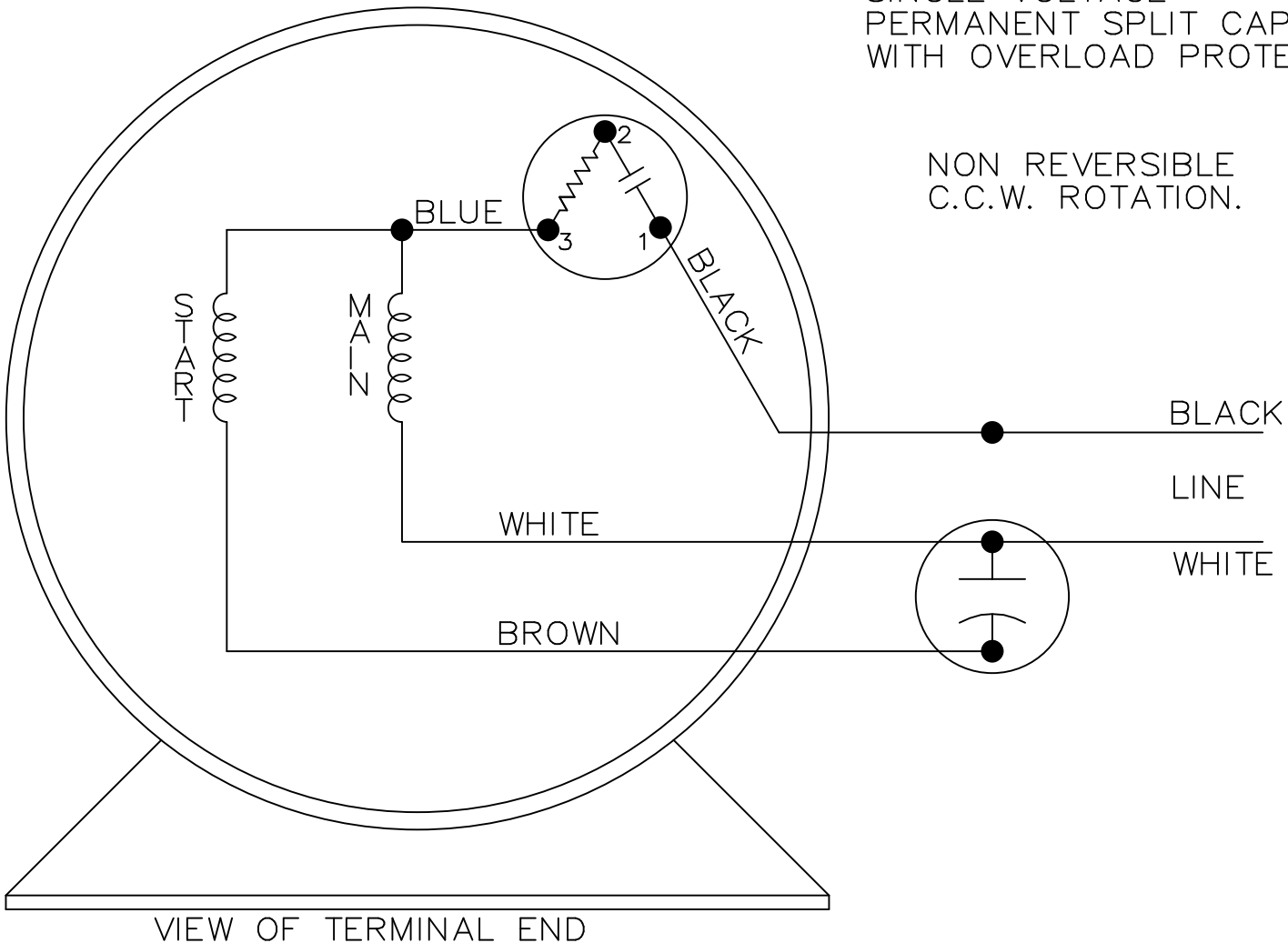
- NOTE:
- 3 LEADS 25" WITH .25 QUICK CONNECT COLORS = BROWN, BLACK, WHITE
 - MOTOR MUST BE ROTATED TO .75" STRIP SOCKET CLEARANCE FOR GROUND SCREW, MAXIMUM (10 DEGREES).

DASH	FRAME	C	XB
756	56-75	23.82	5.00
806	56-80	24.32	5.00


				TOLERANCES UNLESS SPECIFIED			DRAWN RM 03-02-1992					
				DEC.	INCHES		CHK ML 03-03-1992					
				.X	$\pm .1$		APPD GK 03-03-1992					
3	REDRAWN IN AUTOCAD	TAT 10-15-2004	ML	.XX	$\pm .03$	TITLE OUTLINE 56 FR. - BB - DR.PR. - RESIL. BASE	SCALE 11=32					
2	ADDED NOTE CN 24378	PGK 06-10-1997		.XXX	$\pm .005$		REF					
1	NEW DRAWING 3868946	RM 03-02-1992		.XXXX	$\pm .0005$	MAT'L. FINISH	FMF					
NO.	REVISION	BY & DATE	CHK	ANG	$\pm 7'30"$		PREV					
THIS DRAWING IN DESIGN AND DETAIL IS OUR PROPERTY AND MUST NOT BE USED EXCEPT IN CONNECTION WITH OUR WORK ALL RIGHTS OF DESIGN AND INVENTION ARE RESERVED THIS IS AN ELECTRONICALLY GENERATED DOCUMENT - DO NOT SCALE THIS PRINT				RFP	CAD FILE 100582			SIZE	DRAWING NO.	PAGE	OF	REV.
				DIST	WP	A			100582			3

SINGLE VOLTAGE
PERMANENT SPLIT CAPACITOR
WITH OVERLOAD PROTECTOR.

NON REVERSIBLE
C.C.W. ROTATION.



VIEW OF TERMINAL END

				TOLERANCES UNLESS SPECIFIED			DRAWN SMC 03-02-1992		
				DEC.	INCHES		CHK ML 03-12-1992		
				.X	±.1		APPD MJ 03-04-1992		
				.XX	±.03		SCALE 1=1		
				.XXX	±.005		REF		
1	NEW DRAWING	3868948	SMC 03-02-1992	.XXXX	±.0005	MAT'L.		FMF	
NO.	REVISION	BY & DATE	CHK	ANG	±7'30"	FINISH		PREV	
THIS DRAWING IN DESIGN AND DETAIL IS OUR PROPERTY AND MUST NOT BE USED EXCEPT IN CONNECTION WITH OUR WORK ALL RIGHTS OF DESIGN AND INVENTION ARE RESERVED THIS IS AN ELECTRONICALLY GENERATED DOCUMENT - DO NOT SCALE THIS PRINT				RFP	CAD FILE 102009-10		SIZE	DRAWING NO. PAGE OF	REV.
				DIST WP			A	102009-10 1	1

